

# BRIGGS VENEERS

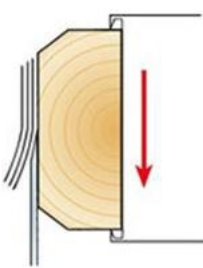
## Understanding Timber Veneer and how to specify....

Timber veneer is a highly sought after, premium decorative product that adds prestige and style to furniture, joinery and paneling. Specifying Timber Veneer involves adding more detail than you would normally need for other decorative boards. There are certain aspects that need to be carefully considered and included in your specification to ensure clarity for the joiner/ fabricator in achieving your design intent.

Timber Veneer is made by cutting logs into thin "leaves" 0.6mm thick. After slicing, the veneer leaves are dried, joined into sheets (known as layons) then glued onto substrate (by specialist panel layers), fabricated into furniture, joinery or wall panels etc and finished with a clear coating.

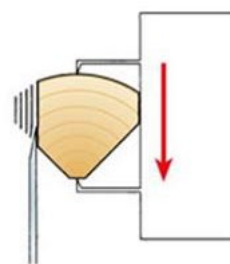
## What is a "cut" and how important is it when specifying?

The timber logs are sliced in different ways depending on the log, the species and the look required. Different cuts can produce quite different looks. There are a number of different cuts, however, the most common are Crown-cut (CC) or Quarter-cut (QC). We will deal with the others: Rotary-/Semi-rotary and Rift-cut in later newsletters.



**Crown-cut (CC)**

Crown-cut veneer tends to have a strong grain pattern interspersed with cathedral patterns, also known as crowns. Crown-cut veneers are produced by cutting the log into halves lengthways and then slicing each half straight across.



**Quarter-cut (QC)**

Quarter-cut produces a veneer with a uniform vertical grain that may or may not be straight depending on the species. To product QC veneer, the log is first cut into quarters then each quarter is sliced at right angles to the growth rings.

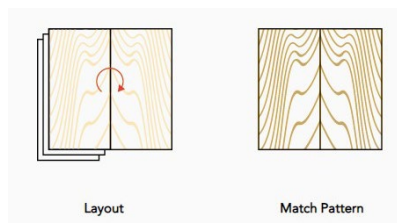
## What is “matching” and how important is it when specifying?

Once the veneer leaves cut and dried, they are stitched or glued together to create a layon. Various "matching" techniques are used to create quite different looks. When specifying, it is important to understand the different matching methods of creating a sheet (or layon) as it may affect the whole look of your project. The most common "matching" techniques are book-matched, slip-matched, random-matched.



**American White Oak (Crown-cut, Book-matched) Project:** Darling Point Apartment  
**Architect:** Chen Chow Little **Photographer:** Peter Bennets

**Book Matching** is when consecutive veneer leaves are flipped over facing each other like pages in a book creating a mirror image of the previous leaf. The symmetrical pattern accentuates the grain, figure and decorative characteristics of the log. It is most commonly used for Crown-cut veneer and is the traditional way of matching veneer leaves. It works well for joinery, cabinetry and small areas of wall panelling.

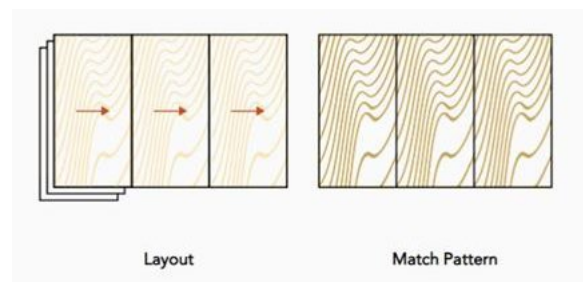




**Victorian Ash (Quarter-cut, Slip-matched)**

**Project:** Thornbury House, Vic

**Slip Matching** is when successive veneer leaves are laid out and joined side by side, creating a repeating grain pattern across the panel. Slip-matching produces fairly uniform appearance because the leaves are similarly oriented resulting in a repeated grain. Slip-matching is a good matching method for Quarter-cut veneer used in joinery/cabinetry and small areas of wall paneling.





**Spotted Gum - (Quarter-cut, Random-matched/Colour-blended)**

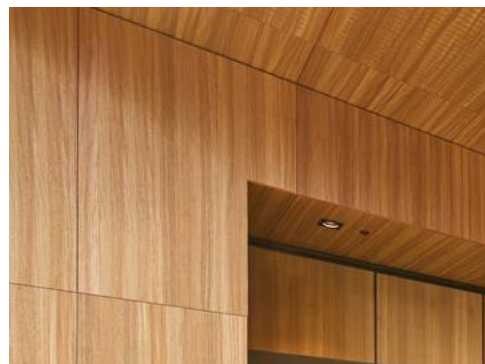
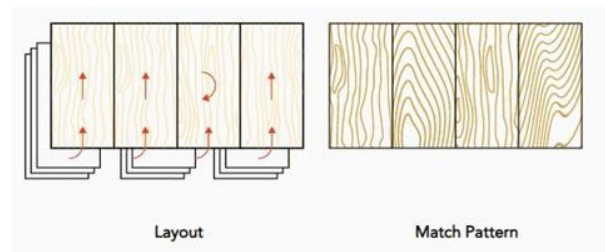
**Project:** International Convention Centre, Sydney

**Architects:** Populous & Hassell    **Joiner:** Euroline & GDK Group

**Panel Layer:** Consolidated Panels and Veneers    **Photography:** Tyrone Branigan

**Random Matching** – the leaves are deliberately unmatched and placed in a random order and orientation, giving an appearance of solid timber. This method is good for large areas of walls and ceilings, because it gives a consistency across hundreds of panels, something which isn't possible with book-matching or slip-matching.

If leaves with a lot of contrast in colour are placed together, this is called **Random-matched/Mis-matched**. For many species, leaves with best possible matching colours can be chosen, called **Random-matched / Colour-blending**.



In future newsletters we will cover topics such as Fire/Flameblock, Forest Sustainability/FSC/PEFC, Specialty veneers – Figured/Burl/minor species, Woodstock dyed veneers, TrueGrain reconstituted veneers, Rotary/Semi-Rotary/Rift-cuts, Marquetry/Special matching, Edging, Coatings, Substrates. If you have any other topics you would like covered, please let us know.

[Visit our website](#)

or contact you local representative....

**NSW, QLD, ACT, WA, NT**

**Rob Mayo**

M: 0418 297 681

E: [rob@briggs.com.au](mailto:rob@briggs.com.au)

**Juel Briggs**

M: 0412 594 419

E: [juel@briggs.com.au](mailto:juel@briggs.com.au)

**VIC, SA, TAS**

**Maree Goodwin**

M: 0439 001 938

E: [maree@briggs.com.au](mailto:maree@briggs.com.au)

follow us on social media.....



or to order samples email us - [samples@briggs.com.au](mailto:samples@briggs.com.au)

Briggs Veneers Pty Ltd  
409 Victoria Street, Wetherill Park, NSW, 2164  
+61 2732 7888

*113 years of experience in wood*

[Preferences](#) | [Unsubscribe](#)